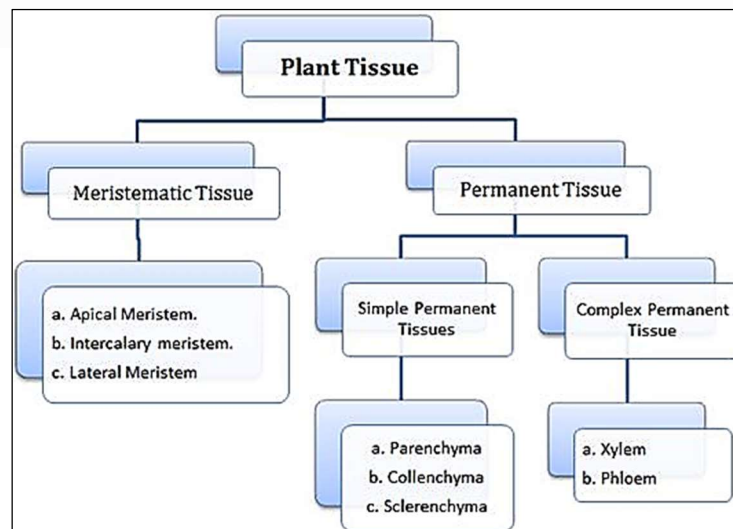


Chapter-6 Anatomy of Flowering Plants

Types of tissues; Tissue Systems in dicots and monocots, Anatomy of Dicotyledonous and Monocotyledonous plants

Anatomy is the study of internal structure of organism. Study of plant anatomy includes histology- study of organization and structure of tissues. Anatomy helps in knowing the structural peculiarities of different group of plants and indicates the structural adaptation to diverse environments.

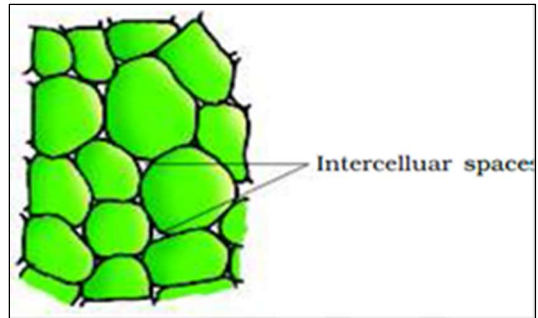
The tissue: A group of cells having a common origin and usually performing common function are called tissues.



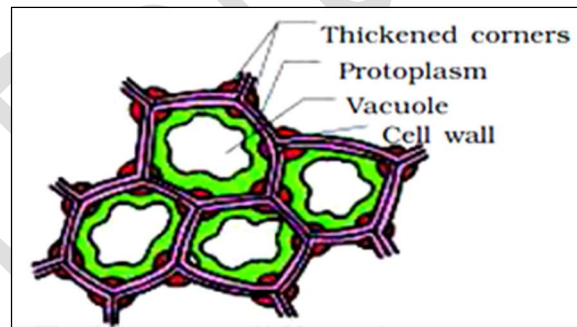
- Meristematic tissue is a simple tissue composed of group of similar and immature cells which can divide and form new cells. The meristem which occurs at tips of roots and shoots are called **apical meristem**.
- **Intercalary meristem** occurs between mature tissues especially in grasses. Both apical meristems and intercalary meristems are primary meristems because they appear early in life of a plant and help to form the primary plant body.
- The meristem which occurs on the sides and takes part in increasing girth of the plants are called **Lateral meristem**. Intrafascicular cambium is the primary lateral meristem. Vascular cambium, cork cambium are secondary meristem.
- The cells that have become structurally and functionally specialized and lose the ability to divide are called permanent tissue. Permanent tissues having all cells similar in structure

and function are called **simple permanent tissues** and those having different kinds of cells are called **complex tissue**.

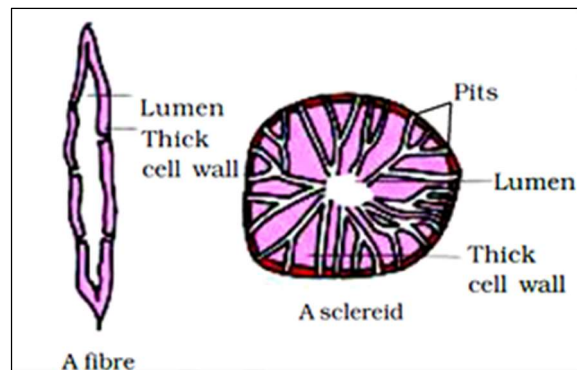
- **Parenchyma** is a simple permanent living tissue which is made up of thin-walled isodiametric cells. Each cell encloses a large central vacuole and peripheral cytoplasm containing nucleus. They are found in non-woody and soft areas of stem, root, leaves, fruits and flowers. They store the food and provide turgidity to softer parts of plant.



- **Collenchyma** consists of cells which are much thickened at corner due to cellulose, hemicellulose and pectin. Oval, spherical or polygonal often contain chlorophyll. They provide mechanical support to the growing parts of the plants like young stem.



- **Sclerenchymas** are supportive tissue having highly thick walled cells with little or no protoplasm due to deposition of cellulose or lignin. They are of two types: fibres and sclereids. They provide mechanical support to mature plant organs to tolerate bending, shearing, compression etc.

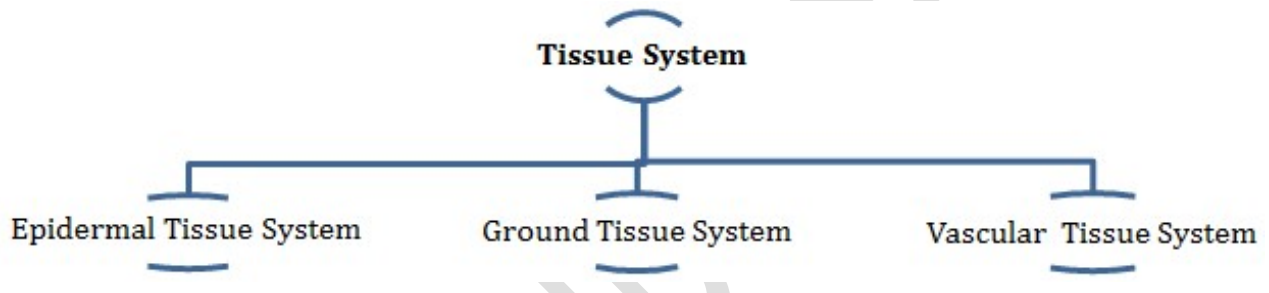


Complex Tissues– Xylem and phloem constitute the complex tissues in plants and work together as a unit.

- Primary xylem is of two types- protoxylem and metaxylem. In stem, protoxylem lies in centre and metaxylem towards periphery. This type of primary xylem is called **endarch**.
- In roots, protoxylem lies in periphery and metaxylem lies towards the centre. This type of primary xylem is called **exarch**.

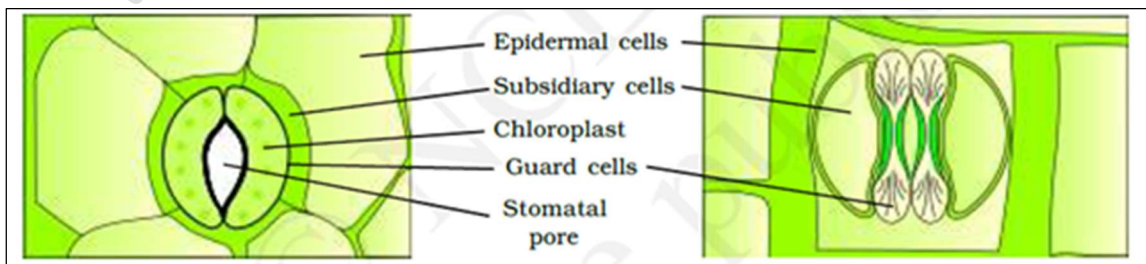
- In gymnosperms, albuminous cells and sieve cells lack sieve tube and companion cells.

Xylem	Phloem
<ol style="list-style-type: none"> 1. It conducts water or sap. 2. Xylem is found deep in the plant. 3. Xylem provides mechanical strength. 4. is made up of vessels, tracheid, xylem fibre and xylem parenchyma. 	<ol style="list-style-type: none"> 1. Phloem conducts organic food. 2. It is situated towards the outer side. 3. It has no mechanical functions. 4. Phloem is made up of sieve tube, companion cells, phloem parenchyma and phloem fibres.



Epidermal Tissue System

- It forms the outermost covering of whole plant body, which consists of epidermal cells, stomata, epidermal appendages (trichomes and hairs).
- Epidermis is single layered, parenchymatous with waxy thick layers of cuticle to prevent water loss.
- Stomata is present in epidermis of leaves. It regulates the transpiration and gaseous exchange. In dicots, stomata are bean-shaped having two guard cells closing the stomatal pore. In monocots, stoma is dumbbell-shaped. Guard cells contain chloroplasts and help in opening and closing of stomata.
- Guard cells are surrounded by subsidiary cells. The stomatal aperture, guard cells and the surrounding subsidiary cells are together called **stomatal apparatus**



Dicots (Bean shaped) Monocots (Dumb-bell shaped)

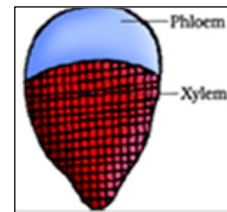
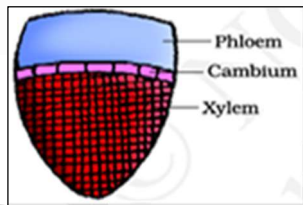
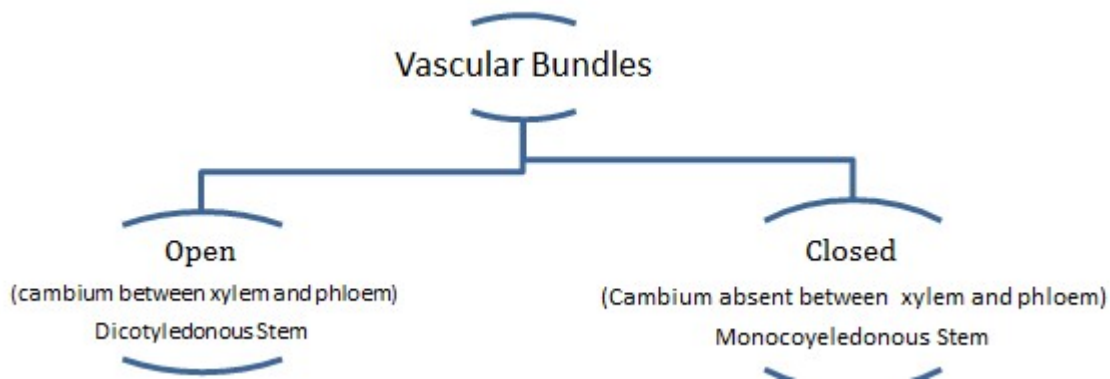
- Epidermis also contains a number of hairs. Root hairs are unicellular elongation of epidermal cells. Trichomes are present on stems, which are multicellular, branched or unbranched preventing water loss due to transpiration.

The ground Tissue System

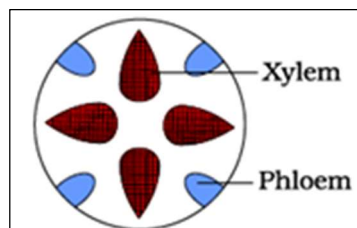
- All the tissue between epidermis and vascular bundle forms the ground tissues. It consists of simple permanent tissues. Parenchyma is present in pericycle, cortex, pith and medullary rays in stem and roots.
- In leaves the mesophyll, chloroplast containing cell, forms the ground tissues.

The Vascular Tissue System

- The vascular system consists of complex tissues, xylem and phloem that together form vascular bundles.



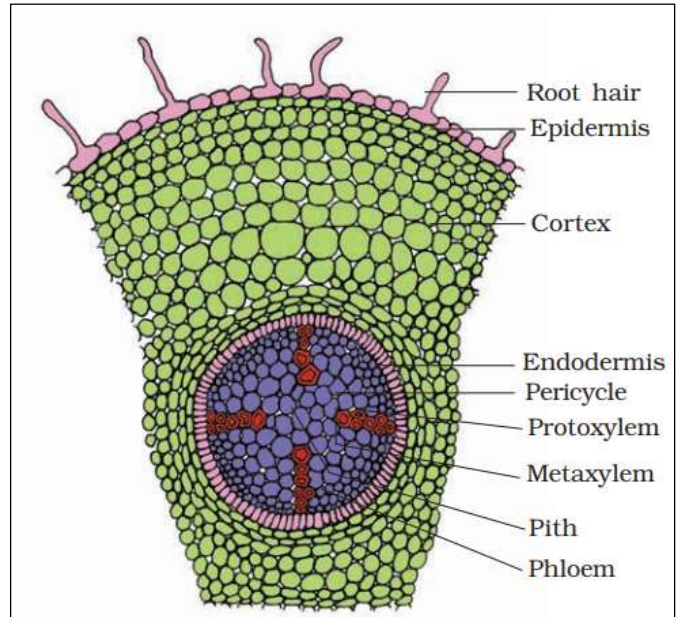
- When xylem and phloem within a vascular bundle are arranged in alternate manner on different radii, the arrangement are called **radial** as in roots. When xylem and phloem are situated at the same radius of vascular bundle, it is called **conjoint** as in stem and leaves.



Radial

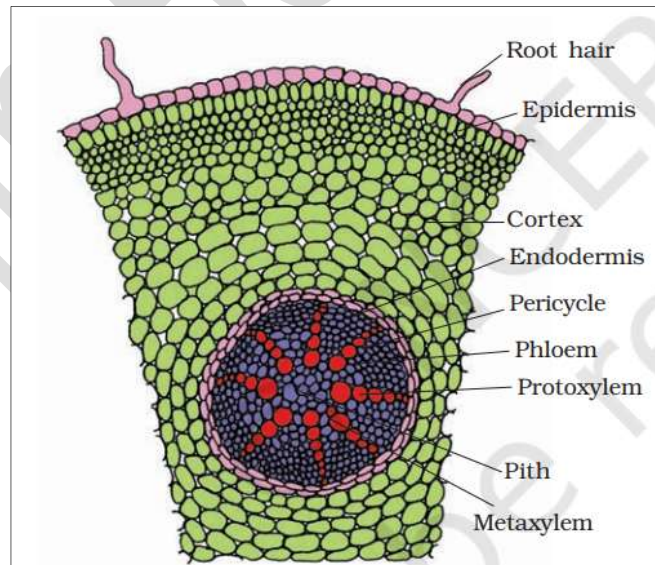
Dicotyledonous Root

- The outermost layer of dicot root is **epidermis** containing unicellular root hairs.
- The **cortex** consists of several layers of thin-walled parenchyma cells.
- The innermost layer of cortex is called **endodermis** having waxy material **suberin** as **casparian strips**, which is impermeable to water.



Monocotyledonous Root

- The anatomy of the monocot root is similar to the dicot root in many respects. It has epidermis, cortex, endodermis, pericycle, vascular bundles and pith. As compared to the dicot root which have fewer xylem bundles.



Dicotyledonous Stem

- **Epidermis:** is covered with a thin layer of cuticle and may have Trichomes and stomata.
- **Cortex:** The cortex is made up of the multiple layers of cells including hypodermis, middle layer of parenchyma cells and innermost layer called endodermis.
- **Endodermis** cells are rich in starch grains and are called the starch sheath. **Pericycle** is present on the inner side of endodermis. Layers of radially placed parenchyma between the vascular bundles are called medullary rays.
- A large number of vascular bundles are arranged in a ring. Each vascular bundle is conjoint, open. Protoxylem is endarch.

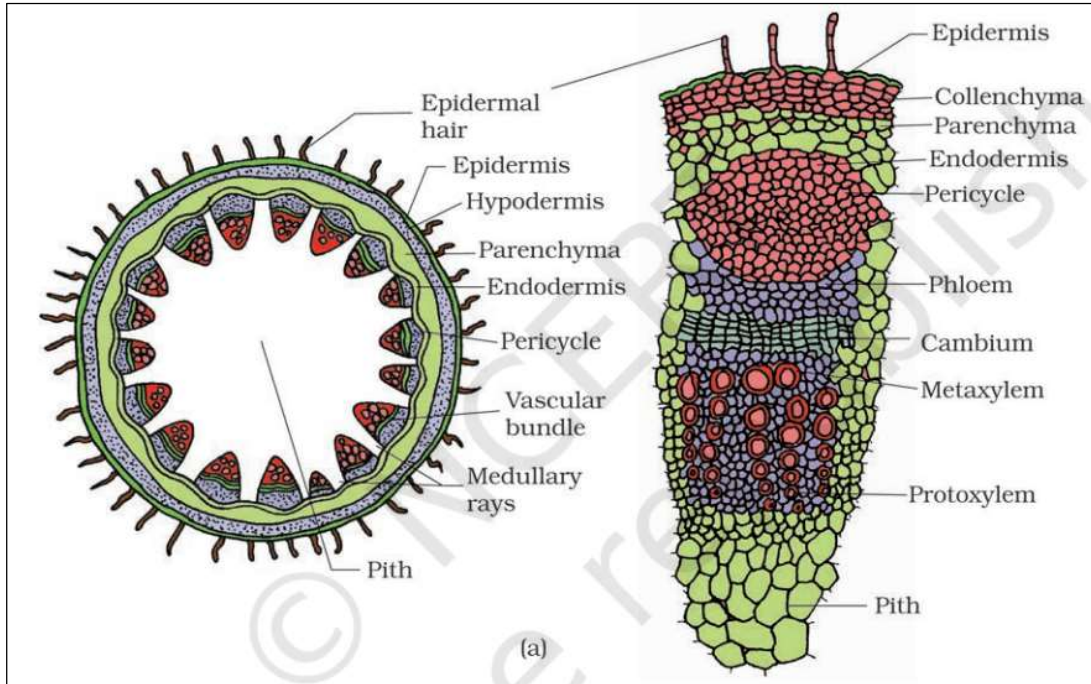


Fig: T.S. of Dicot Stem

Monocotyledonous Stem

- The hypodermis is made up of sclerenchyma. Vascular bundles are conjoint, closed and scattered. Each vascular bundle is surrounded by a sclerenchymatous bundle sheath.
- Phloem parenchyma is absent. Water-containing cavities are present within the vascular bundles.

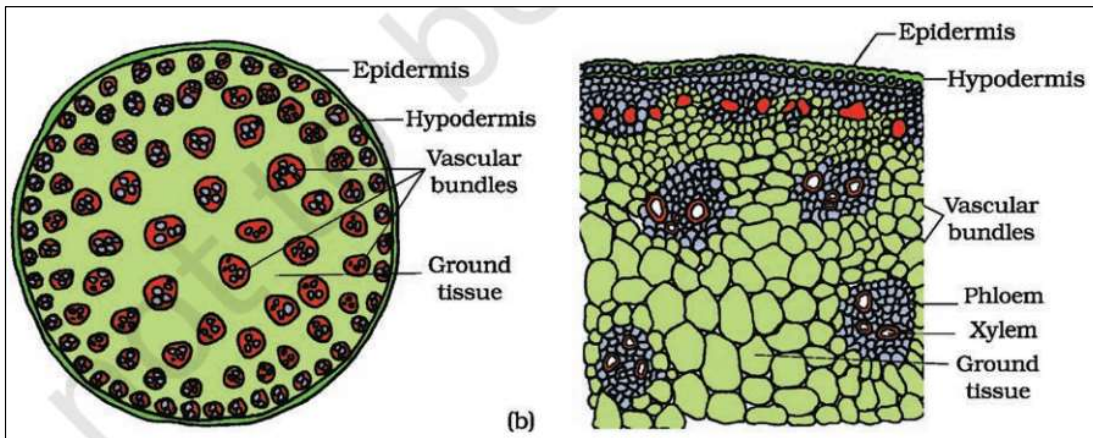
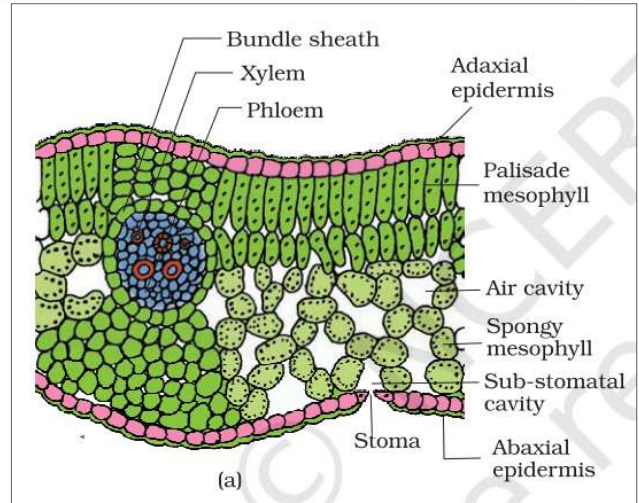


Fig: T.S. of Monocot Stem

Dorsiventral (Dicotyledonous) Leaf

- The leaf lamina of a dorsiventral leaf has 3 parts: epidermis, mesophyll and vascular system.
- The upper epidermis is called adaxial epidermis and lower one is called abaxial epidermis. More number of stomata are present on the abaxial epidermis.
- There are two types of cells in the mesophyll: palisade parenchyma and spongy parenchyma. The palisade parenchyma is placed adaxially.
- The spongy parenchyma is situated below the palisade parenchyma and extends to the lower epidermis. There are numerous large spaces and air cavities between the cells of spongy parenchyma.
- Vascular bundles are surrounded by a layer of thick-walled bundle sheath cells.



Isobilateral (Monocotyledonous) Leaf

- Stomata are present on both the surfaces of an isobilateral leaf. The mesophyll is not differentiated into palisade and spongy parenchyma.
- Some adaxial epidermal cells in grasses are modified into large, empty cells called bulliform cells. When the bulliform cells absorb water, they become turgid. So the leaf surface is exposed. During water stress, when the bulliform cells become flaccid, the leaves curl inwards to minimize water loss.

